

# Killarney

M A N I T O B A

*There's no better place*

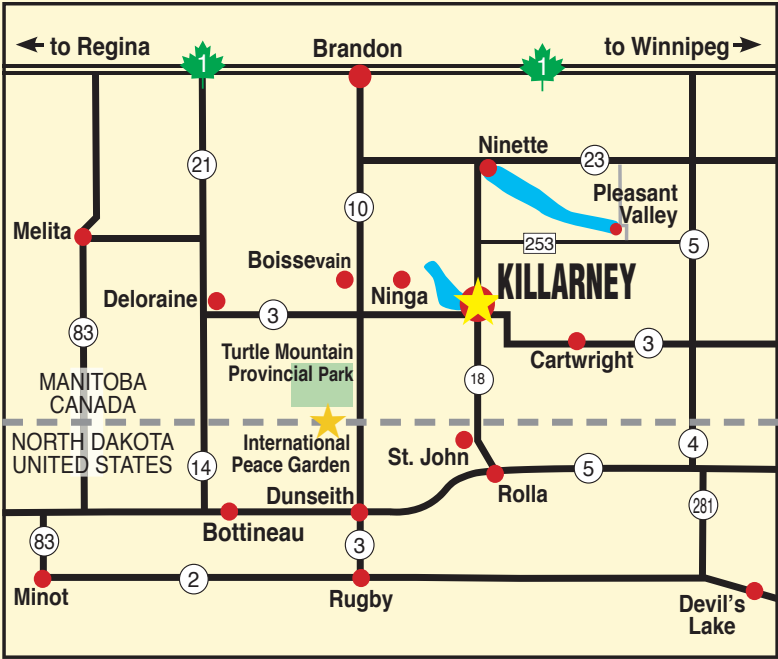


VISITOR & RELOCATION GUIDE 2020

# How to find us

**Killarney** is situated in southwest Manitoba on Highway 18, beside beautiful Killarney Lake and near the majestic International Peace Garden.

- Less than a 10 minute drive from the Canada-US border.
- Population of just 2,500 - with all the city comforts.



## Travel Manitoba Tourist Information:

Tourist information is available at the Heritage Village off Highway 3. Brochures are available at the Killarney Place mall kiosk.

## For more information about Killarney contact:

### Killarney Community Development Corp.

725 Broadway Avenue  
Box 820, Killarney, MB R0K 1G0  
Ph. 204-523-8920  
Email: [krec@mymts.net](mailto:krec@mymts.net)  
or visit [www.killarney.ca](http://www.killarney.ca)



Printed and published by  
THE KILLARNEY GUIDE  
[www.killarneyguide.ca](http://www.killarneyguide.ca)

## CONTENTS

Welcome	3
Town Tour	5
Events Calendar	7
Parks & Beaches	8
Trails	10
Recreation	11
Activities & Attractions	14
Accommodations	19
Dining	21
Health Care	22
Education & Childcare	24
Worship	25
Retirement or Relocation	26
Shopping & Services	27
Agriculture	35



# Killarney

## *The Emerald Isle Oasis*

Nestled along the shores of beautiful Killarney Lake, the prairie oasis of Killarney offers ample opportunity to relax and enjoy the amenities. Golf enthusiasts will find paradise in this popular resort town, well known for its traditional links style 18-hole golf course, complete with lush green fairways that border the lake. Winter recreation abounds with scenic snowmobile and cross-country ski trails and the Shamrock Centre recreation complex.



## Welcome to Killarney



**RICK PAULS**  
Mayor

As mayor of the Municipality of Killarney-Turtle Mountain, I wish to welcome all visitors to our community. Come experience our many beautiful parks, campgrounds and 18 hole golf course known as the Jewel of the South. Our full range of businesses can meet your every need with a small town familiarity. For the curious, you should not miss our museums, library or information booth. We

have many summer activities, including our summer fair, beach festival, pioneer days, shuffleboard in the park, or baseball for any age who would like to join, just to name a few. If you are visiting our campgrounds or boating on the lake, you should make the time to take a drive in our beautiful countryside. As agriculture is our predominant industry, the Municipality has many agricultural based services that meet the needs of our area farmers. Come visit our community. We'd be glad to meet you!

Welcome to Killarney-Turtle Mountain. Home of beautiful landscapes, one-of-a-kind events, and year-round activities. Killarney-Turtle Mountain has lots to offer. Whether you're looking for housing, recreation or just a day away, you can be sure to find lots to do in this hidden gem.

Killarney is an age-friendly community, with a great sense of community pride.

If you have any questions or need assistance, please contact our office at [info@doylepiwniuk.ca](mailto:info@doylepiwniuk.ca), or give us a call at 1-204- 552-0130.



**DOYLE PIWNIUK**  
MLA



# Shamrock Centre

**THE RECREATION DESTINATION OF SOUTHWEST MANITOBA**

- Skating Arena • Curling Rink • Bowling Alley • Community Banquet Hall
- Fitness Centre with Walking Track • Concession • Licenced Lounge
- Meeting Rooms • Offices • Handicap Accessible Elevator Lift



Wendy Giesbrecht - Facility Manager      Wendy Evans - Recreation Assistant  
 Ph. 204-523-8920 • Fax 204-523-8349 • Email: krec.w@mymts.net • P.O. Box 820 Killarney, MB R0K 1G0

**[www.killarney.ca](http://www.killarney.ca)**





# A quick tour through town

Killarney's Broadway Avenue.

## **Welcome to Killarney – a small town with a big heart.**

And a lot to do. The kids can enjoy the new splash park, and you can take in some serious golf, launch a boat, swim at the beach, or set up in a number of leafy campsites. There's restaurants, a liquor store, a large food store, and pharmacy, and of course our extensive health centre – to name just a few of the town's many amenities.

Here's how to find some of them.

**From Highway 3:** You can pull north into Killarney from Hwy 3 onto Water Avenue. The town's historic water tower is visible just to the west at this turn.

As you travel up Water Avenue, you will see the Emerald Isle Motel on your left, and the popular, seasonal, retro-1950s Beach Hut diner (complete with mini-golf) on your right.

Maybe people flock to the take-out and diner because it's right across from the leafy and forested Erin Park, with its sandy beach, the splash park, BBQ pits (with firewood), washrooms, change rooms, and a smoothly paved walking trail that winds along the shore of Killarney Lake. Numerous summer events take place each year here in the park, geared to both youngsters, and to those a little less youthful.

Continuing towards town, and looking right, is the expansive Ag Grounds (with their connected

campground), and also the entrance to the newly restored and re-invented Heritage Home for the Arts, a vibrant arts centre with regular gallery exhibitions, music events, and a variety of ongoing creative workshops.

Driving along, you will cross the Water Avenue Bridge, with Killarney Lake opening up beside you on the left, and the bay and campsite boats shining on your right. The road then swings around to the east here, becoming Park Street, and if you hang a left on Broadway Avenue (keep an eye out for the beautifully manicured Centennial Park garden on your right at this signposted corner), you will be heading straight into the town's business centre.

### **Business District:**

Driving north up Broadway, you will spot a number of beautiful heritage houses (designated with lawn signs), and then the Play Park on your right, situated on the town's peaceful Green Space. This is also the location for the town's popular Farmers Market, held each summer on Saturday mornings. Nearby is the Co-op gas bar and convenience store, a Subway, plus the big Co-op food store.



Centennial Park.

# Business District



**Broadway Avenue's popular play park.**

Entering Killarney's town centre, you will find restaurants, the post office, a bakery, florist and gifts, hardware stores, banks, hair salons and a spa, insurance providers, and a law office.

There's also a government liquor store, travel agency, a boutique-style and clothing outlet, a phone and computer provider, major car dealership – and more.

Across Broadway from the Erin Inn Motor Hotel (which includes a restaurant, bar, and beer vendor), is the Killarney Place mall, featuring an Irish-flavoured pub and restaurant (with adjoining public restrooms), a quality shoe and workwear store, a top fashion outlet, large pharmacy, dentist services, giftware and florist, plus a huge furniture showroom, and more.

Situated at the northwest corner of Broadway and South Railway is a special memorial park, named for local philanthropist Keith Heming. A few blocks past the tracks, and on your left, is the Shamrock Centre, and its next-door neighbour the Wilderness Inn Motel (complete with authentic stuffed bears and alert deer occupying the lobby).

You can bowl in the rec centre, curl, skate, play hockey, enroll in dance and fitness classes, work out in the gym – and also use the spacious washroom facilities here to freshen up after your trip. The Shamrock Centre is also a prime location for a number of major sports, economic, and business events scheduled throughout the year, including the 2018 Manitoba Scotties Tournament of Hearts.

Going back to South Railway Avenue, and turning left (east) brings you to the municipality's recently completed million-dollar fire hall, with its five bays, plus room for the fire fighters to both train and clean up after callouts.

Across the road is the Mary Ann Moore Wellness Centre, which offers a long list of esthetician services, plus yoga, bogafit and aquafit classes, therapeutic massage, a salt pool, whirlpool and sauna, a floating cabin, plus dietitian and foot care services. Special weekend events also take place in these modern, beautiful new premises.

And that's only a taste of what the town has to offer.

Read on to find out more about everything Killarney.

Enjoy your stay – and we hope you come back for more.

## **Westside Community Gardens.**





# 2020 Calendar of Events



Cruizing to Killarney car shows will be rolling through town again in 2020.

**MARCH 14**

**St. Patrick's Day Celebrations**

**MAY 2**

**Rippin' And Roarin' Bull Riding**

**JUNE 6**

**Town Wide Yard Sale**

**JUNE 21**

**Vintage Car Show**

**JUNE 26-27**

**Summer Blast & Fair Days**

**JULY 1**

**Canada Day Celebration  
& Fireworks**

**JULY 11-12**

**Prairie Pioneer Days**

**JULY 17-18**

**Killarney Beach Festival**

**AUGUST 2 & 9**

**Little Irish Downs  
Harness Racing**

**AUGUST 15**

**Dubs at the Lake  
VW Car Show**

**AUGUST 28-29**

**Sidewalk Sale Days**

**NOVEMBER 7**

**Stuffed Stocking**

**DECEMBER 4-5**

**Christmas in Killarney**

## STAY CONNECTED

Download our app and register with us to stay up to date with all the latest local news, upcoming events, emergency alert messaging, and weather for the Municipality of Killarney-Turtle Mountain. Available for the iPhone and Android phones.

**Visit**

**[www.killarney.ca](http://www.killarney.ca)**

for more information or to get your app.



email: [tmkly1@mts.net](mailto:tmkly1@mts.net) • 204-523-7247

*Killarney ~ There's No Better Place!*



# Parks and Beaches



**Erin Park's soft sandy beach provides hours of fun.**

## Killarney Lake

During the lazy days of summer, Killarney Lake is the hub of outdoor activity. From swimmers to water skiers, canoeists to fishing enthusiasts, everyone can find space to call their own. A boat launch and marina are situated on the quiet bay just outside Erin Park. Inside the park is a buoyed swimming area, sandy beach, washrooms and change rooms, and a new splash park, all helping to provide the perfect blend of summer recreation.







Entertainment on the beach, volleyball, softball, and a Saturday night social are all Beach Fest staples.

## Erin Park

A meandering paved path leads strollers along an unspoiled shoreline, through a mature grove of elms and oaks, and past the Shamrock Fountain and the Blarney Stone. Over the rise, beside a shaded picnic area and horseshoe pitch, is the sunny expanse of a fine sand beach. Park visitors enjoy the convenience of picnic shelters, washrooms, showers and change houses, plus beach volleyball courts. A motel, campgrounds and restaurant are all located within one block of Erin Park.



## Erin Park Splash Park

The new Splash Park is guaranteed to entertain and keep you cool on those hot sunny days. Located conveniently beside Killarney Beach.





# Explore the Trails

Killarney Ag Campground and bayside trail by night.

## Walking Trail

Feel like a peaceful walk by the bay? Killarney's walking trail is just what the doctor ordered. The path begins by the Agricultural Campground, and meanders along the shoreline, past barns and the antique farm machinery at Heritage Village. The well-lit path allows for night-time strolling as well. Whether you enjoy it on foot or riding a bicycle, the trail around the bay is the perfect way to relax and enjoy some beautiful scenery.



## Cross-Country Skiing

Opportunities await you throughout the Killarney area. Call the Shamrock Centre at 204-523-8920 for maps and information.



## Nature Trail

When you're in the mood for walking, check out the nature trail south of the beach parking lot and across Highway 3. With the trickling Whitemud Creek, and walking paths along the small marsh areas, the trail is the perfect spot for bird watchers and nature sightseers.



# Recreation



**Karate class on the beach.**

Sports, recreation and leisure activities for all ages are offered in Killarney, and form a valued part of our lives in the community.

People of all ages and abilities can find a way to compete, stay active, or enjoy the camaraderie of a team at the many facilities in Killarney.

The Shamrock Centre is a major recreation hub within the municipality. It includes a large artificial ice arena and curling rink, large capacity hall, six-lane bowling alley, large fitness centre, and meeting room space.

Other recreation/sport facilities within Killarney include tennis courts, soccer fields, baseball diamonds, campgrounds, miniature golf, numerous playgrounds, the fairgrounds, and a harness racing track. There's also the focus for many of our recreational pursuits – Killarney Lake.

For athletes with a competitive edge, or those just looking for some recreational fun, there are many opportunities to join a team, a league, or take on an individual challenge.

The recreation department works closely with figure skating, hockey, minor and senior baseball, martial arts, aquatic programs, volleyball, dance,

and a variety of other activities and sports within the community.

Killarney Lakeside Golf Club is well known for its lush greens and scenic fairways. This 'hidden jewel of the south' is an 18-hole course, offering a full service clubhouse with restaurant, pro shop, driving range, and golf facilities.

Winding its way through stately oaks, and along the shores of Killarney Lake, this is a refreshing and popular place to work on your swing and enjoy a great game of golf.

Killarney is no exception to the growing trend of making health and fitness a top priority.

Personal fitness facilities and spin cycling are available in the Shamrock Centre, while local groups provide instruction in weight training, yoga, aerobics, pilates, badminton, horseback riding, archery, and rifle club.

Whether you're looking for a chance to score some points, shoot some pool, or join a card game, the list of sports and leisure activities available in Killarney is endless.



# Golf



## Killarney Lakeside Golf Club

The beautiful waters of Killarney Lake lap against the shores next to Killarney Lakeside Golf Course. This 18-hole course boasts lush green fairways, and both traditional and links style design. Complete with beautiful scenery, rolling and level fairways, and some interesting water holes, you'll be captivated and challenged at the same time. Killarney Lakeside Golf Club also offers a licensed restaurant, a practice green and range, rental equipment, and top quality golf merchandise. Located conveniently on the outskirts of town, with a peaceful lake view, golfing can truly be a relaxing, yet formidable sporting experience.



## Pleasant Valley Golf Club

Just a 20-minute drive northeast of Killarney, the Pleasant Valley Golf Club is another must-see on your golf tour. Just head north on Hwy. 18, turn east on 253, and follow the signs. This family-owned and operated 18-hole Championship golf course offers elevations rising up 125 feet, and large undulating greens. Tree lined fairways and a meandering creek make your game fun for all skill levels. An outdoor patio offers a scenic view after a round of golf. *"Nothing Quite Like It!"*



Nestled in the scenic Pembina Valley at the south end of Pelican Lake, this 18-hole course offers a challenge for all.

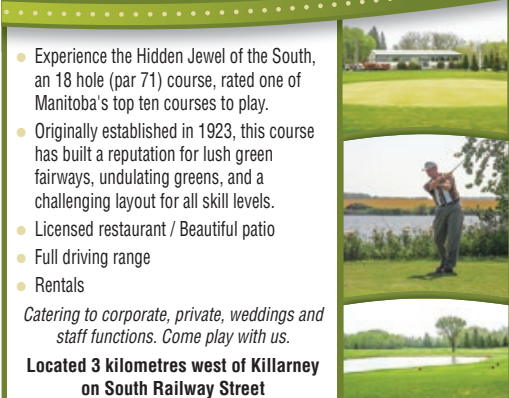
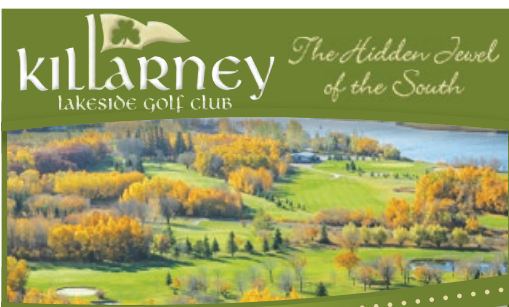
- Large greens cut into hill sides
- 9 hole putting green
- 40 golf cart rentals
- Licensed clubhouse & restaurant
- Wheelchair accessible

Check us out on Facebook 

Corporate & Group Bookings welcome

204-537-2487

[www.pleasantvalleygolfclub.ca](http://www.pleasantvalleygolfclub.ca)



- Experience the Hidden Jewel of the South, an 18 hole (par 71) course, rated one of Manitoba's top ten courses to play.
- Originally established in 1923, this course has built a reputation for lush green fairways, undulating greens, and a challenging layout for all skill levels.
- Licensed restaurant / Beautiful patio
- Full driving range
- Rentals

Catering to corporate, private, weddings and staff functions. Come play with us.

Located 3 kilometres west of Killarney on South Railway Street

**Tee Times: 204-523-8277**

[www.killarneylakeside.com](http://www.killarneylakeside.com)

[www.killarney.ca](http://www.killarney.ca)



# Shamrock Centre

Killarney's recreation destination is the Shamrock Centre. Completed in 2008, the state-of-the-art sports facility has already attracted several big events, including the Scotties Tournament of Hearts in January 2010, and again in January 2018.

The main floor hosts the curling and hockey arena, banquet hall, dressing rooms, concession, washrooms, bowling alley, change rooms and offices. The second floor hosts a sound room, fitness area, change rooms, elevated viewing areas and press box, walking track, washrooms, meeting rooms, and a licensed lounge with a concession.

The facility also features seating for 750 in the hockey arena and 220 in the curling rink, as well as a handicap-accessible elevator lift.

Be sure to check out Killarney's Shamrock Centre.  
It will bowl you over!



From bull riding to hockey, the Shamrock Centre has it all.



The Shamrock Centre hosts many big events, but none bigger than the Scotties, won by Team Jones in 2018.



# Activities and Attractions



Old fashioned fireworks at Pioneer Days.

## Killarney Fair

Killarney Fair runs at the ag grounds on June 26 and 27. Action starts Friday evening with the chuckwagon and chariot races, along with a supper, beer garden, and music under the tent. Saturday starts with a pancake breakfast, followed by the parade, which makes its way down Broadway Avenue, bringing with it a variety of floats and plenty of candy for the kids.

There's a second go-round with races on Saturday, plus homecraft displays, a cattle show, as well as the light and heavy horse competitions. These favourites, along with popular events like the petting zoo, pig scramble, mutton bustin', watermelon eating, Killarney Idol, and more, are joined with new twists each year. There's also plenty of food and stage entertainment running throughout the weekend, and lots of children's activities.



## Prairie Pioneer Days

Take a look at farming the old-fashioned way, and see first hand the changes that have taken place in agriculture over the last century. Hosted by the dedicated Turtle Mountain Flywheel Club, Prairie Pioneer Days attracts hundreds of people who come to enjoy threshing demonstrations, log sawing, and machinery displays. Wander through a variety of displays that include a toy show, a working blacksmith shop, plus local fare and entertainment. The pride of Pioneer Days is the Sunday afternoon parade in front of

the grandstand, where enthusiasts shine up their favourite antique farm implements for the finale. Make a stop at the Heritage Village, the Heritage Home for the Arts, as well as the Stationary Engine Museum, all focused on our rural heritage and proud prairie history. And, new this year, enjoy the Killarney Hammer-In, which will feature a full weekend of workshops by experienced knife makers and blacksmiths. Held July 10 to 12 at the Killarney Agricultural Grounds.





From chariot to chuckwagon racing, there's plenty of horsing around at Killarney Fair.

## Turtle Mountain Flywheel Club 44th Annual Prairie Pioneer Days

FEATURING:



**GARDEN TRACTORS  
Power Machinery  
Museum**

Open July & August  
10 a.m. to 5 p.m.

**Saturday & Sunday, July 11 & 12, 2020**  
Killarney Agricultural Grounds

### SATURDAY & SUNDAY EVENTS:

- Toy Show 11 a.m. to 4 p.m.
- Kids' activities during the day
- Log Sawing & Threshing - Steam & Gas

### SATURDAY:

- Beer Garden 1 to 11 p.m.
- Antique Tractor Pull 2:30 p.m.
- Supper 5:30 to 7 p.m.
- Music 7 to 10 p.m. Woody Holler Trio



### SUNDAY:

- Pancake & Sausage Breakfast 7 to 10 a.m. (free with admission)
- Beer Garden 1 to 5 p.m.
- Car Show - 10 a.m. to 4 p.m.
- Parade 1:30 p.m.
- Ticket draw after parade

For more information: Text or call Rick 204-523-1881 or Sheri 204-215-2302

1st Annual

## Killarney Hammer-In

Sponsored by the Killarney Turtle Mountain Arts  
Council & the Turtle Mountain Flywheel Club

**Friday, July 10 to  
Sunday, July 12, 2020**

A full weekend of workshops and presentations for the novice and more experienced knife maker, by experienced knife makers and blacksmiths.

### Weekend includes:

- Opening reception
- Workshops
- Forge demonstrations
- Open forge times
- Tailgate swap meet, show and tell tables
- Free weekend entry to Prairie Pioneer Days

Full registration (including 5 meals) - \$200 per person  
Workshops and presentations only - \$150 per person

For more information:  
contact the Heritage  
Home for the Arts at  
ktmartsCouncil@gmail.com  
or call 431-734-0394  
Tuesday to Saturday,  
12 noon to 4 p.m.





## St. Patrick's Celebrations

St. Pat's for Kids always promises to entertain at the Shamrock Centre. The annual celebration, held on Saturday, March 14 in 2020, has loads of activities for the kids. The popular St. Pat's Bonspiel is held annually on that weekend, at the same location, along with a variety of entertainment.

## J.A.V. David Museum

The lavishly stocked museum displays the contents of the original Killarney Post Office and General Store. Also on display are local archives, homestead maps, cemetery records, war relics, pioneer tools and natural history artifacts, a doctor's office, plus elegant period clothing, and even granny's kitchen.

New displays are featured every year. A must see. Open July and August, Tuesday to Saturday, 10 a.m. to 5 p.m. (closed at noon). Open other times by appointment. Phone 204-523-7325, 204-523-7369 or 204-523-4706. Located at 414 Williams Avenue.

## Little Irish Downs

The Little Irish Downs in Killarney has been one of the most popular stops on Manitoba's harness racing circuit for over 30 years. The Great Western Manitoba Harness Racing Circuit stops in Killarney for two back-to-back Sundays of action, scheduled for August 2 and 9.

Killarney is at the top of the list, hosting the most successful weekends for bets placed of any of the races held throughout the province. Watch Manitoba's top drivers compete over the racing weekends, which include up to nine pari-mutuel races each day.

Located at Killarney's Agriculture and Sports Grounds, just off the southern entrance to Killarney, the Little Irish Downs is centrally located near camping and hotel accommodations, as well as restaurants and Killarney Lake's main beach.

This makes it a favourite stop not only for fans, but for the drivers, trainers and their teams as well.

Come catch the action, and pick yourself a winner at the Little Irish Downs this summer.

**Volkswagen enthusiasts head to Killarney Beach again on August 15 for the popular Dubs at the Lake weekend.**





# Killarney Little Irish Downs

KILLARNEY, MANITOBA

## Harness Races

**2 exciting Sundays!**  
**August 2 and 9, 2020**

Post time 1:30 p.m.  
\$5 admission

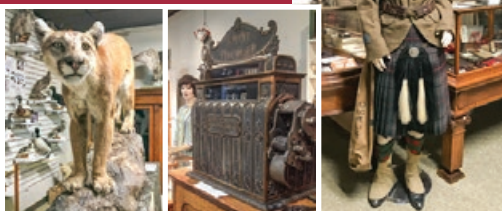
Up to 9 parimutuel races per day

***Come see Manitoba's  
top drivers compete!***



For information contact 204-523-8495 or 523-8551

## Take a Step Back in Time



A walk through the museum will take you back in time to the general store, and pioneer kitchen. We have a large camera collection, homestead maps, cemetery records, war memorabilia, and archives. The natural history room has many different collections including Shadow the Cougar.

***Come and visit our displays and enjoy a tour.***

**OPEN JULY & AUGUST**  
**TUESDAY TO SATURDAY 10-12 & 1-5**  
Other times by appointment

## J.A.V. David Museum

204-523-7325, 204-523-7369 or 204-523-5663  
414 Williams Avenue, Killarney, MB



- Homecraft Displays • Commercial Displays • Cattle Show
- Light & Heavy Horses • Miniature Horse Classes • Beer Gardens
- Mutton Bustin' • Pig Scramble • Stage Entertainment all afternoon
- Chuckwagon Races • Children's Entertainment

***Lots of games and  
activities for the kids!***



**Friday & Saturday,  
June 26 & 27, 2020**

**Killarney Agricultural Grounds**

- FRIDAY: - Chuckwagon Races  
- Beer Gardens w/entertainment
- SATURDAY: - **PARADE 10 A.M.**  
- **Free Pancake Breakfast**  
with paid gate admission



**STAY FOR A DAY, A WEEK OR A MONTH**

### KILLARNEY AGRICULTURAL SOCIETY CAMPGROUND

**RESERVATIONS ACCEPTED**  
**204-523-4699**

Entrance on Water Street from No. 3  
Highway, from No. 18 Highway via  
Park Street to Water Street.



Scenic campground on Killarney Lake  
providing 115 sites, most with sewer and  
30 amp service. Open 24 hours per day.  
Bathrooms and shower facilities available.  
Dump station on site. Daily, weekly and  
monthly rates. Manager on site from  
May 1 to September 30.

**Seasonal sites available**

[www.killarneyagriculturalsociety.ca](http://www.killarneyagriculturalsociety.ca)

Email: [killarneyag@live.ca](mailto:killarneyag@live.ca)

[www.killarney.ca](http://www.killarney.ca)

## Farmers Market

The Killarney Farmers Market provides fresh produce and much more every Saturday morning throughout the summer, next to the Broadway Ave. play park.



## Christmas in Killarney

Christmas in Killarney offers family fun and extended store hours, so you'll be sure to get a good start on the Christmas season. Santa will make a special trip to take part in the annual evening parade on Friday, December 4, and will be in town Saturday too for a meet and greet.

## Canada Day

Canada Day celebrations are always a blast! With plenty of family entertainment, and a live band to keep things rockin' through the evening, it's all capped off with a fabulous fireworks display at the Fair Grounds. Happy Birthday Canada!



Dragonfly sculpture.



## Snowmobiling

Killarney is a great snowmobiling destination that connects you to 500 km of well-groomed trails.

With signs to guide the way, snowmobilers can travel through the Killarney area, and throughout southwestern Manitoba, all on one linked-up trail.

Boissevain artist and sculptor Don Engbrecht (below) was commissioned in 2016 to create a very special installation for the new Keith's Korner memorial park, located at the corner of South Railway and Broadway Avenue. The late Keith Heming was a local lawyer and philanthropist who spearheaded the establishment of the Killarney Foundation back in 1978. See another one of Engbrecht's beautiful sculptures that adorn the town – a dragonfly – on the bottom left.





# Accommodations & Dining



Ag Campground on the bay.

## Agricultural Society Campground

The Killarney Agricultural Society Campground is ideally placed for those participating in summer festival events and beach activities. Located across the street from Erin Park on the quiet bay, you can dock your boat by a campsite with optional cable hookup. The campground also features bathrooms, showers, a dump station, a boat launch, and 115 sites, most with sewer and 30 amp service.



The Emerald RV Resort, just across the street from Killarney Beach and Splash Park.

## Kerry Park Campground

Heading out west on South Railway Street, you will find Kerry Park Campground. Kerry Park boasts 225 sites, tennis courts, a large playground area for children, and a boat launch on Killarney Lake that's away from the center of activity. It's also located just down the road from the Killarney Lakeside Golf Club. Weekly and monthly rentals are available.

## Emerald Suites Motel and RV Resort

Located behind the Emerald Suites Motel, the RV resort is conveniently located across the street from Killarney Beach. The campground features 75 serviced lots with washrooms, showers, and firewood.

Kerry Park's playground.



# Erin Inn Motor Hotel



- Cold beer vendor
- Pub with pool tables & 8 VLTs
- 16 newly renovated rooms with AC & free Wi-Fi
- All homemade food
- Best pizza & burgers in town
- Daily lunch & supper specials
- Breakfast from 10 a.m. all day
- Serving bar food until 11 p.m. Thursday to Saturday

STAY

EAT

PLAY

543 BROADWAY AVE., KILLARNEY, MB

**204-523-4651**

erininnhotel@gmail.com



[www.canadianwildernessinn.com](http://www.canadianwildernessinn.com)

*Stay with us!*

- 29 spacious guestrooms
- wireless internet
- continental breakfast
- 3 locations to serve you

*Killarney!*

**204-523-4111**

220 Geates Street West  
South of the Shamrock Centre  
killarney@canadianwildernessinn.com

*Boissevain!*

**204-534-7155**

Located on Hwy #10 South  
306 Mountain Street  
boissevain@canadianwildernessinn.com

*Deloraine!*

**204-747-3751**

110 Cavers Street North  
deloraine@canadianwildernessinn.com

# Emerald Suites MOTEL & RV RESORT

- In-room Fridge, Microwave, Coffee Maker
- Air Conditioned
- High Speed Wireless
- Cable T.V.
- Propane BBQs & Picnic Tables for guests
- Restaurant & Miniature Golf adjacent
- **1 Bedroom Light Housekeeping Suites**
- **All rooms completely renovated**
- **2 Bedroom Cottage Available**
- 75 Serviced RV/Campground Sites ~ Seasonal & Daily



**Located across the street from the beach on beautiful Killarney Lake and the ERIN PARK SPLASH PARK!**

Guests enjoy discount  
Golf Coupons

*We look forward to  
meeting you.*

Owned & Operated by Southwest Resorts Inc.  
RICHARD A. KAUTZ, President, CEO & Gopher  
103 Water Avenue • P.O. Box 1600, Killarney, MB R0K 1G0  
**PH: 204-523-4215 • 1-866-523-4215 • FX: 204-523-3396**  
[rakautz@emeraldisle.ca](mailto:rakautz@emeraldisle.ca) [www.emeraldisle.ca](http://www.emeraldisle.ca)



# The GRIND



508 Broadway Ave.  
9 - 4:30 MON-FRI

Home cooked food  
In house baking  
Specialty coffee  
Loose tea

# SUBWAY

eat fresh.



322 Broadway Ave.  
Killarney  
204-523-8520

MON-FRI 7:30 a.m.-9 p.m.  
SAT-SUN 9 a.m.-9 p.m.

# Wu's Restaurant

204-523-8989 • Dine In or Take Out



**NOON SMORG**  
Monday to Friday & Sunday

**EVENING SMORG**  
Friday to Sunday

523 Broadway Avenue, Killarney  
**OPEN 7 DAYS A WEEK**  
TUE-SAT 9 a.m.-8:30 p.m. • M & SUN. 11:30 a.m.-8:30 p.m.

## Vintage Car Show

The Beach Hut attracts some truly amazing cars every summer for their Vintage Car Show, scheduled this year for Sunday, June 21.



**523-4144**  
505 Broadway Ave.  
Killarney

Open 6 a.m.-7 p.m.  
Monday to Saturday  
DINE IN ~ TAKE OUT



**KELBY'S**  
Breakfast Lunch Licensed Dining

# KELBY'S Restaurant

est. 2006

- Paninis
- Pasta
- Pizza
- Steak
- Salads
- Sandwiches

**Fully Licensed Restaurant**



# THE BEACH HUT

## RESTAURANT & MINIATURE GOLF

- Wraps
- Salads
- Chili
- Hot Dogs
- Fries
- Ice Cream
- Shakes
- Sundaes

Water Street off Hwy. #3  
Killarney, MB  
**204-523-8880**  
Email: beachhut@live.com



EAT IN OR TAKE OUT  
(DELIVERY AVAILABLE)  
OPEN 7 DAYS A WEEK

**BEST BURGERS IN TOWN!**

# Health Care



Garden courtyard at Bayside Personal Care Home.

Nothing is more important than the health and wellness of those visiting Killarney, and those who call the community home. Providing the best health care in a comfortable rural setting is one of the community's top priorities.

Highly qualified medical staff, including doctors, nurses and technicians, create a team that provides professional treatment and services to Killarney-Turtle Mountain and the surrounding area.

Killarney is a regional centre for the delivery of health and community services.

The Tri-Lake Health Centre, a modern facility with an attached personal care wing, provides the best in medical care. Acute care, along with 24-hour urgent care services, is available at the local hospital, along with palliative care and a host of other important services including a lab facility, ultrasound unit, and a state-of-the-art xray unit. A team of doctors takes appointments, including walk-ins, at the adjoining medical clinic.

This is also the site for MB Telehealth, which links patients from southwest Manitoba to specialists across the province via live video and audio.

A long list of other health professionals provides a variety of medical services to the community. Dentists, optometrists, registered massage therapists, and a chiropractor serve the needs of patients from Killarney and the surrounding area.

The skills of pharmacists, physiotherapists, and dieticians are also readily available. The public health unit oversees community care from prenatal classes to care for the elderly.

## Medical/Nursing

The Acute Care hospital has 22 beds, three observation beds, and two treatment rooms.

Bayside Personal Care Home next door has 60 beds, and a beautiful interior courtyard for residents.

These two areas provide opportunities for physicians, registered nurses, licensed practical nurses, and health care aides.



## Killarney Health Clinic and Tri Lake Health Centre (TLHC)

86 Ellis Drive  
Clinic 204-523-4609  
TLHC 204-523-4661

The health centre serves an area of approximately 5,800 people. From May long weekend to September long weekend, approximately 200 cottages by Killarney Lake and 1,000 cottages surrounding Pelican Lake are occupied. As well, numerous campgrounds in the area are filled to capacity with hundreds of visitors. During the summer months the population of Killarney-Turtle Mountain Municipality doubles in number.





Killarney Airport is used for emergency transfers by STARS helicopters and other medevac aircraft, like this Twin Otter. Patients can be transported quickly to centres such as Winnipeg.

## Emergency Services

Safety is a priority in Killarney as well. The RCMP staff a detachment in the community, and police, along with ambulance, fire, and rescue, provide excellent emergency services to the community and surrounding region. STARS air ambulance services are also available out of the local airport, just minutes south of Killarney.



The fire department’s pumper truck turned 50 in 2017.



The Killarney Turtle Mountain Fire Hall, newly completed in 2020.

# Killarney Pharmacy

Caring for our Community.

Prescriptions • Health & Beauty Aids

**204-523-4273**

In Killarney Place mall  
530 Williams Avenue

**RxPharmaChoice** *Advice for Life*

Tri-Lake Health Centre’s ultrasound suite.



# Education & Childcare



Killarney School's running club.

## Turtle Mountain School Division

435 Williams Avenue • 204-523-7531

### Killarney School

417 King Avenue • 204-523-4696

Operated by Turtle Mountain School Division, the school offers education for kindergarten to Grade 12, plus the Killarney Nursery School.

The school has a speech language therapist, a division psychologist, a counsellor, plus class video-conferencing between division high schools.



Killarney School toots their horn with an excellent band program.



Lakeside Christian School students helping out at the Community Garden just west of their school.

## Lakeside Christian School

237 Hammond St. • 204-523-8240

The Lakeside Christian School has been at its present location since 1999. It is funded independently, and offers kindergarten to Grade 12.

## Turtle Mountain School Division

oversees the operation of seven schools:

- four Hutterian schools
- one K-8 school
- two K-12 schools
- two Adult Education centres



The Division employs approximately 200 teaching and support staff who “strive to provide an education that prepares individuals for a meaningful life in a changing world.”

**There are many reasons to consider a career with Turtle Mountain School Division.**

The quality of our programs, collegial staff, wonderful students, and supportive school communities help us attract and retain the best people. Teaching positions are posted on:

Apply to Education and our website.

For further information, visit our website:

[www.tmsd.mb.ca](http://www.tmsd.mb.ca)



**Over 23,000 titles**

Check your email at the public internet access terminals.

**Free Wi-Fi**

**204-523-4949**  
318 Williams Ave.  
[www.lakelandregionallibrary.ca](http://www.lakelandregionallibrary.ca)

Tues. Thurs. Fri 9 a.m.-5 p.m.  
Wed 9 a.m.-9 p.m.  
Sat 9 a.m.-4 p.m.





## **Turtle Mountain Adult Education**

510 Finlay Street • 204-523-4492

The adult education centre has been in operation since 1998, providing quality education for mature students earning their high school diplomas. The centre also provides assistance in connecting to post secondary education.

## **Kiddie Corner Early Learning Centre**

711 Mountain Avenue • 204-523-8940

Licensed child care for ages 12 weeks to 6 years in our early learning centre. Licensed school-age care for ages 6 to 12 years in their program located at Killarney School.

## **Tots of Love Early Learning Centre**

305 Broadway Avenue • 204-554-8687

Trained staff, with four infant spaces and 16 preschooler spaces available. Casual, full-time and part-time. Hours: 6:30 a.m. to 5:45 p.m.

## **Killarney Nursery School**

Located at Killarney School  
204-523-1566

Killarney Nursery School accepts children aged 3-4 years of age. Leadership is provided by qualified staff. Subsidies are available.



## **Lakeland Regional Library**

Ample, up-to-date book and periodical collection, access to Internet, films, videos, foreign language programs, eBooks and talking books. Turn to page 24 for location and more information.



# **Places of Worship**

Killarney is a community with a strong sense of spirituality and faith. The church plays an important role for many people who live in Killarney, or spend time visiting the area.

With churches serving a variety of denominations, most people are able to fill their spiritual needs locally. The thriving church community can be seen in the many expanding and renovated houses of worship built in the last several years.

From worship services to special programs for youth, men, women, and seniors, the churches offer a variety of avenues to get involved and make a connection with others.

**Calvary Baptist Church** - 312 Mountain Ave.

**Free Methodist Church** - 333 Hossack Ave.

**Holy Trinity Anglican Church** - 204 Fletcher St.

**Kingdom Hall of Jehovah's Witnesses** - Hwy. 3

**Killarney Mennonite Church** - 66 Bay Ave.

**Killarney United Church** - 432 Williams Ave.

**Lakeview Community Church** - 616 Lakeview Ave.

**New Life Assembly** - 411 Finlay St.

# Retirement or Relocation



Heading home after school down leafy streets.

Killarney is the perfect place to retire or relocate.

It is a community ready to welcome newcomers – the door is wide open!

With rapidly improving technology, it is easy to do business globally while choosing a home base locally. The world is at your fingertips, while you can enjoy small town life and all the benefits it brings. An affordable cost of living, in a safe and growing community, top the list of things attracting new people to Killarney.

There is also a growing demand for professionals in a number of fields, including health care, and

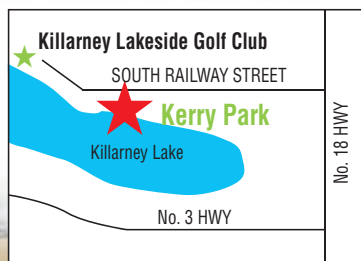
a constant need for skilled trades workers for a variety of local businesses and services.

Maybe you're looking for a community where you can relax and enjoy the retirement phase of life.

Affordable housing in a scenic community makes Killarney a popular place for retirees.

Access to excellent medical care, and a long list of leisure activities and programs aimed to keep seniors busy and active, along with all the shopping and services you need right down the street, make it an easy choice to relocate to Killarney.

## KERRY PARK



Full service site:

\$35/day

\$210/week

\$700/month

\$1,500/seasonal

- 225 Sites
- Tennis Courts
- Children's Playground
- Beach Volleyball
- Washrooms/Shower
- Boat Launch
- Firewood
- Drive-thru Sites
- Close to Golf Course
- Weekly & Monthly Rentals



OPERATED BY THE  
KILLARNEY KINSMEN

For more information contact managers Ron & Cheryl Burke 204-523-6000 or visit [kerrypark.ca](http://kerrypark.ca)

[www.killarney.ca](http://www.killarney.ca)



# Shopping & Services



**Killarney's popular annual Sidewalk Sale on Broadway.**

A thriving business centre, Killarney is the hub for a variety of shopping and services for a large trade area in the southwest corner of Manitoba.

If you're just in Killarney for a visit, or you call the community home, you can find everything – and more – that you need right here.

Whether you're looking for the perfect keepsake from Killarney, a locally-made treat, or the ingredients for a lakeside barbecue, you'll find it in town.

The business district boasts a major car dealership, florist and gift shops, investment and real estate offices, three financial institutions, bakeries, furniture, and clothing stores, a meat market and abattoir, computer sales and service, plus grocery and hardware stores, which are just a small sampling of the retail outlets that can be found in Killarney's downtown.

The Killarney Place mall has many businesses, and the mall corridor often hosts craft sales, displays, and special events.

Courteous service, ample parking, and easy access all contribute to the growth of the thriving retail sector.

The town and surrounding area also offer many specialized services, including building centres, commercial printing, as well as engine repair and rebuilding.

Hotels, restaurants and convenience stores serve both the local residents of the community, and Killarney's many visitors. With more than 175 businesses and services ready to serve you, Killarney can meet your every need.

But there's always room for more.

Killarney is ready for industrial expansion, and the door is always open for someone looking to establish a business to serve a niche market.

With rapidly advancing technology, you can do business around the world, while enjoying the benefits of living in a quiet, safe and affordable community.

In Killarney the global economy is at your fingertips, while the beach and golf course are in your backyard.



**The best selection of footwear  
in southern Manitoba**

**\$20 off** ON REGULAR PURCHASE  
OF \$100 OR MORE  
Some restrictions apply. Expires February 28, 2021.



**SHOES & M'ORR**

**204-523-7248**

VISIT US IN THE KILLARNEY PLACE MALL  
[www.shoesandmorr.ca](http://www.shoesandmorr.ca)

## Floral Design & Event Planning

~ Artisan Gifts ~

Boutique style;  
Small town service

**Carol Reimer**

**204-523-7388**

516 Broadway Ave.

Killarney, MB



[www.sweetpeaandwillow.ca](http://www.sweetpeaandwillow.ca)





## For all your equipment rental needs

We are a Hutterite rental centre located southwest of Killarney, MB offering a large variety of tools and equipment for contractors or home owners.



- Hand-held / Power Tools
  - Scaffolding
  - Janitorial
  - Landscaping & Yard Maintenance
  - Concrete Equipment
  - Shop Tools
  - Trailers
  - Lighting Equipment
  - Building Tools
  - and a whole lot more!
- 100s OF TOOLS & PARTS*

EQUIPMENT SALES AVAILABLE – AUTHORIZED DEALER



### MAYFAIR COLONY FARMS LTD.

Box 1360, Killarney, MB R0K 1G0

204-523-0662

email: larrywayfairrentals@gmail.com

www.wayfairrentals.ca



## CENTURY 21.

Westman Realty Ltd.



Arlene Klassen  
204-523-6092



Deb Robins  
204-523-2334

Residential  
Lakeshore  
Commercial  
Acreages • Farms

www.arleneklassen.com  
www.debrobins.com

Visit us in Killarney Place mall • 204-523-7088

## MARVAL AUTO BODY

*Complete Auto  
Body Service*



**DAVID KINLEY**

434 North Railway St.  
Killarney

Ph: 204-523-4974  
Fax: 204-523-7598

## A Beautiful Place for Flowers and Gifts



### Community Florist & Gift

204-523-7059

OPEN MON - SAT 9 A.M. - 5:30 P.M.  
IN KILLARNEY PLACE MALL

## Killarney Taxi

- Town To Town Travel & Deliveries
- Advance/Scheduled Bookings
- Volume Discounts • Gift Cards
- Weddings • Group Events
- Family Gatherings • Airport Travel

204-523-4439

**24  
Hour  
SERVICE**



www.killarney.ca



**Service, Protection  
& Peace of Mind**



**REAL ESTATE**

**INSURANCE**

Home • Auto • Life

**FINANCIAL PLANNING**

GICs • RRSPs • RESPs • RRIFs  
TFSAs • Investments



532 Broadway Ave. Killarney, MB  
204-523-4922 • Toll Free 1-866-355-8292  
[www.lewisandjonesgroup.com](http://www.lewisandjonesgroup.com)

**LET US HELP YOU  
FIND A HOME**



**Curtis Dickson**  
Cell 204-523-6321



**Marlee Cline**  
Cell 204-523-1831

[www.lewisandjonesgroup.com](http://www.lewisandjonesgroup.com)  
[www.marleesellsrealestate.ca](http://www.marleesellsrealestate.ca)

**Lewis & Jones** *Professional service  
and peace of mind.*

Your "local" destination for  
**ALL OF YOUR  
HOME FURNISHING NEEDS**



Open Monday to Saturday 9 a.m. to 5:30 p.m.

**Maurice's**  
HOME FURNISHINGS

**204-523-7771**  
Killarney Place mall  
530 Williams Avenue  
Killarney



[www.killarney.ca](http://www.killarney.ca)

Shopping • Services **29**

**THE Carpet WAREHOUSE LTD.**

204-523-5667  
1-800-325-8066  
442 North Railway St.  
Killarney

**Carpet • Vinyl Flooring  
Ceramic Tile  
Vinyl Tile • Hardwood Floors  
Cork Flooring • Para Paint  
Window Coverings**



[www.thecarpetwarehouse.ca](http://www.thecarpetwarehouse.ca)



Custom Kitchen & Bathroom Cabinetry by Decor Cabinets  
Quartz & Laminate Countertops • Sinks & Faucets  
Professional Design, Service & Installation

**Creative KITCHENS LTD**  
Killarney, MB 204-523-8712

[info@creativekitchensmb.ca](mailto:info@creativekitchensmb.ca) / [www.creativekitchensmb.ca](http://www.creativekitchensmb.ca)

2500 sq. ft. of showroom • 8.5 miles N of Killarney on Hwy. 18

**NO CHARGE IN-HOME MEASURES, DESIGN & PRICING**

*For all your*  
**PRINTING NEEDS**

Business Cards • Letterheads • Envelopes  
Brochures • Placemats • Programs • Posters  
Newsletters • Menus • Flyers • Social Tickets  
Photocopying • Web Printing  
...and more!

**Ask us about full colour digital imaging**

**The Guide**

204-523-4611  
[printing@killarneyguide.ca](mailto:printing@killarneyguide.ca)  
336 Park Street East, Killarney

Big city style in a  
great small town



**Gwen's TRENDS** LADIES & MENS WEAR

In Killarney Place mall  
530 Williams Avenue, Killarney, MB  
PH. 204-523-8162 Email: [trends@mts.net](mailto:trends@mts.net)



**Sales and Leasing**



**Parts and Service**

**Chapman's** "Your Satisfaction is our Future"  
Killarney, MB  
1-204-523-4674 Toll Free 1-888-309-8162  
[www.chapmanmotorsgm.ca](http://www.chapmanmotorsgm.ca)





**Live at the Legion:** The newly renovated Killarney Legion Hall, upstairs from the clubroom, is a venue for live shows like the popular Derina Harvey Band. The hall (with kitchen) is available to rent for socials, community events, parties, meetings, and other activities.



**Legion**   
Branch #25

**112 Finlay Street, Killarney**  
MON-WED 11 a.m. - 9 p.m.  
THURS-SAT 11 a.m. - 10 p.m.



**Tuesdays:** Evening Crib 7 p.m.  
**Thursdays:** Bingo 6:45 p.m.  
**Fridays:** Chase the Ace 5-6 p.m.  
**Saturdays:** Meat Draw 5-6 p.m.

**Outdoor Patio • Dart League**  
**Hall Rentals (newly renovated)**

**COME JOIN THE FUN!**  
**NO MEMBERSHIP REQUIRED.**

## Killarney Laundromat

**9 Washers including 1 Oversize Washer**  
**for Sleeping Bags & 10 Dryers**  
**All machines cleaned & checked daily**

**Located 1-1/2 blocks east of Post Office on**  
**Finlay in beautiful downtown Killarney, MB**

**OWNER/MANAGER JOHN EVANS**

**Summer hours: April 1-October 31 - 7:30 AM - 10 PM**

**Winter hours: November 2-March 31 - 9 AM - 9 PM**



## KILLARNEY OPTOMETRIC CENTRE

*Life is worth seeing!*



**204-523-4613 • 405 Broadway Avenue, Killarney, MB**

**Dr. C. DeCock O.D., M.S., F.A.A.O. • Dr. D. McGill O.D. • Dr. K. Letts O.D., F.A.A.O.**

[killarneyvision.com](http://killarneyvision.com)



[kvseyes@gmail.com](mailto:kvseyes@gmail.com)

[www.killarney.ca](http://www.killarney.ca)

**Shopping • Services 31**



The salt pool at the new Mary Ann Moore Wellness Centre is just one of the numerous amenities and services offered at the centre. Many visitors come for the day – and enjoy a combination of services, including a healthy lunch. Special functions and events also take place throughout the year. See more at their website: [mamwellness.ca](http://mamwellness.ca)

## Health, beauty, inspiration – all under one roof



- ❖ Yoga
- ❖ Therapeutic massage
- ❖ Hair services
- ❖ All esthetician services
- ❖ Electrolysis
- ❖ Dietitian
- ❖ Foot care
- ❖ Microblading
- ❖ Fitness classes

- Salt pool
- Hot tub
- Infrared sauna
- Float cabin

*Stop in or call us to make an appointment or to learn more about all we have to promote your wellness.*



**204-523-8629**

542 Mountain Avenue  
Killarney

  
Mary Ann Moore  
**WELLNESS  
CENTRE**

[www.killarney.ca](http://www.killarney.ca)





**Westoba**  
CREDIT UNION LTD.



**WELCOME TO  
KILLARNEY!**

Visit us at  
110 Finlay Street.



1-877-WESTOBA | westoba.com



**HOME  
hardware**

8:30 A.M.-5:30 P.M. MON.-SAT.

**204-523-4635**

509 Broadway Avenue  
Killarney

[www.homehardware.ca](http://www.homehardware.ca)

# Heritage Home for the Arts

*Killarney's community arts & culture centre*

- Art exhibitions
- Performing arts
- Workshops for all ages & experience
- Rentals for special events & meetings



**Open from September to May,  
Tuesday to Saturday, 12 noon to 4 p.m.**  
Please call for extended hours from June to August

For more information call 431-734-0394 or  
email: [ktmartscouncil@gmail.com](mailto:ktmartscouncil@gmail.com)  
[www.killarneyarts.com](http://www.killarneyarts.com)



**Killarney Turtle Mountain  
arts  
Council**



Located at 44 Water Avenue, Killarney



**Killarney Food Store**

204-523-4653

MON-FRI 8:30 a.m. - 8:00 p.m. | SAT 8:30 a.m. - 6:00 p.m. | SUN Noon - 6:00 p.m.



**Boundary Co-op**

[boundaryco-op.crs](http://boundaryco-op.crs)



**Killarney Gas Bar**

204-523-5051

MON-SAT 7:00 a.m. - 10:00 p.m. | SUN 8:00 a.m. - 10:00 p.m.



**Cardlock/Bulk Petroleum**

204-523-6124

24 HOURS, 7 DAYS A WEEK

[www.killarney.ca](http://www.killarney.ca)

Shopping • Services **33**



Heritage Home hoedown during Canada's 150th.

## Heritage Home for the Arts

The elegant Heritage Home for the Arts project was completed in 2018, after restoring and re-creating the town's century-old Farm Demonstration House, originally built for the experimental farm manager's family back in the early 1900s.

A wide variety of arts and culture-related activities now take place here throughout the year – some of them outside on the house's beautiful, shady verandah.

Inside, art exhibition pieces grace the walls of the beautifully finished interior year round.



The interior of the Heritage Home for the Arts.



**CENTENNIAL  
FARM SUPPLY LTD.**

- CardLock
- Propane
- Lubricants
- Napa brand Tools
- Welding Supplies
- Fuel Storage Tanks & Equipment

**204-523-4938**

**437 Finlay Street E • Killarney**

**GOODYEAR**  
Get there™

## Killarney Tire Service

SEE US FOR ALL YOUR AUTOMOTIVE NEEDS.

***We're more than just tires.***

- Windshields
- Safeties
- Brakes
- Alignments
- Qualified Auto Mechanics on staff



**204-523-7591**

509 Fletcher  
Street East  
Killarney, MB





# Agriculture



**Inland grain terminals load up railway cars.**

The Municipality of Killarney-Turtle Mountain and surrounding area are deeply rooted in agriculture. This industry, which serves as both an economic and cultural cornerstone, has stood the test of many changes and challenges for more than a century. Both the town and the surrounding rural area continue to prosper and grow as an agribusiness centre.

Flowering, fragrant canola borders corn, wheat, barley and oats in farmers' fields. Numerous specialty crops, including soybeans, millet, and sunflowers, are also grown.

Producers from a large trading area come to Killarney for the inputs they need to grow a strong and healthy crop, to upgrade or service their equipment, and to market their commodities.

Known as the wheat capital of Manitoba, Killarney features three inland grain terminals and two state-of-the-art feed mills. Implement dealerships representing major manufacturers are located in Killarney, in addition to machine and welding shops and modern service centres.

There is a well-known auction mart and a veterinary clinic to accommodate the needs of numerous livestock producers.

Agribusiness is an integral part of the local economy, which includes large seed and seed cleaning operations, and numerous hog barns.

The agricultural community is constantly working to keep up with changing technologies, tap into food production trends, and is strongly supported in their efforts to add value to their products.

Killarney has a plan to take advantage of any opportunity that finds a fit with the community.



**Killarney's \$30 million HyLife feedmill was completed in the summer of 2018.**





**204-523-4414**  
KILLARNEY

[www.mazergroup.ca](http://www.mazergroup.ca)



**204-523-4644**  
KILLARNEY

[rockymtn.com](http://rockymtn.com)




**QUALITY**  
PARTS • SALES • SERVICE

*Big city atmosphere  
...small town feel*



**Pub • Restaurant • Banquet Room**

**Open 7 Days a Week**

**204-523-7PUB**

**In the Killarney Place mall**